



#### United States

📍 355 Palermo Ave  
Coral Gables, Florida 33134, USA  
☎ +17864266079

#### Bangladesh

📍 2B, Orion Green Garden, 285  
Ashkona, Dhaka 1230, Bangladesh  
☎ +1 818 900 9852

#### Colombia

📍 Ingeniería y Desarrollo: Carrera  
14# 127 a 45 Bogotá, Colombia  
☎ +57 311 6535901

#### Hong kong

📍 161~167號 Des Voeux Rd Central,  
Central, Hong Kong  
☎ +86-535-6723166  
☎ +86-535-6723171 / 67231729

#### United Kingdom

📍 18 King William Street, London,  
EC4N 7BP  
☎ 020 3375 8046



Aluminum alloy grid drawer



Aluminum Alloy  
Covered storage basket



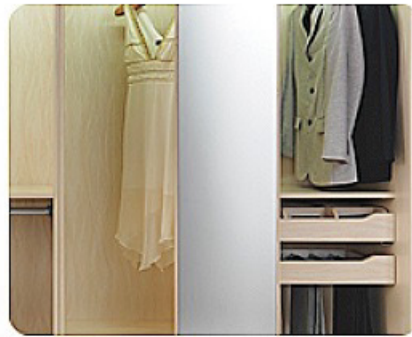
Trousers rack



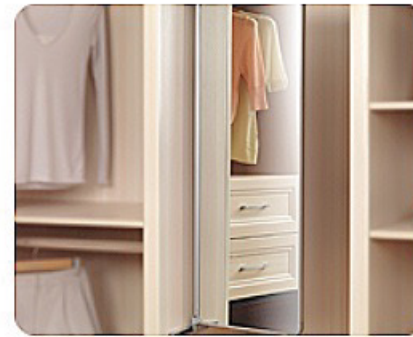
Small goods rack



Telescopic ironing board



Chuanyijing belt pulley



Push & pull mirror



Insert type secret box



Semi insert type secret box



Induction type LED wardrobe lamp



LED wardrobe lamp



Charging type LED wardrobe lamp



# 2 5 kinds of custom concept

01

Space combination design concept revolves around convenient, personalized experience, optimization function, space utilization and flexible combination of the five largest customers core requirements, the frequency, objects and features five partitions custom design philosophy, system construction overall wardrobe digital customized products.



Upload  
Partition



Download  
Partition



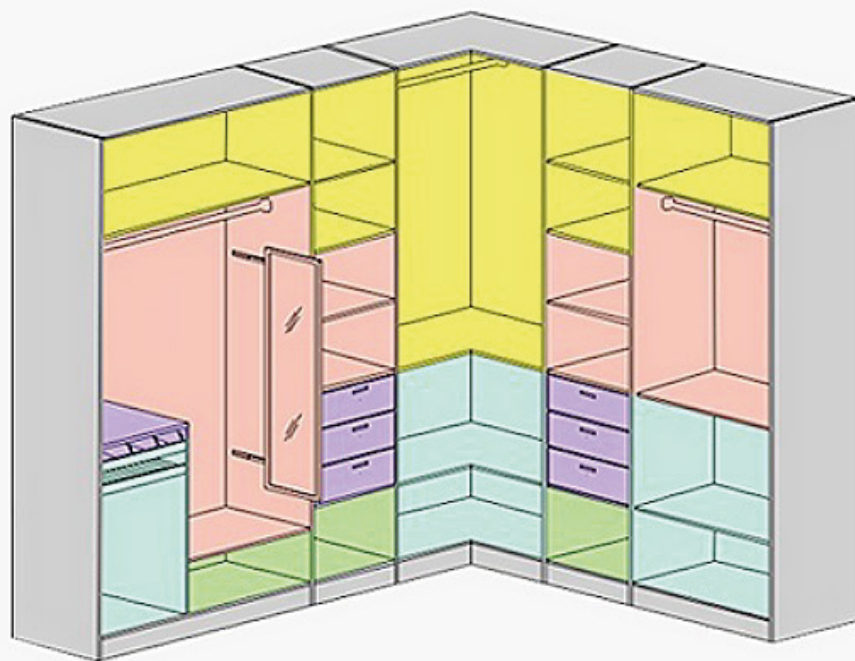
Quilts and  
Blankets  
Partition



Shoes and  
Socks  
Partition



Wear jewelry  
Partition



# 02

## Adhere to the European E1 level environmental protection standard plate

We have always committed to for each family to provide more environmentally friendly, more healthy environment furniture, adhere to consistent with the use of European E1 class environmental standards, materials, and all use automatic edge banding techniques and products using the process without pollution.



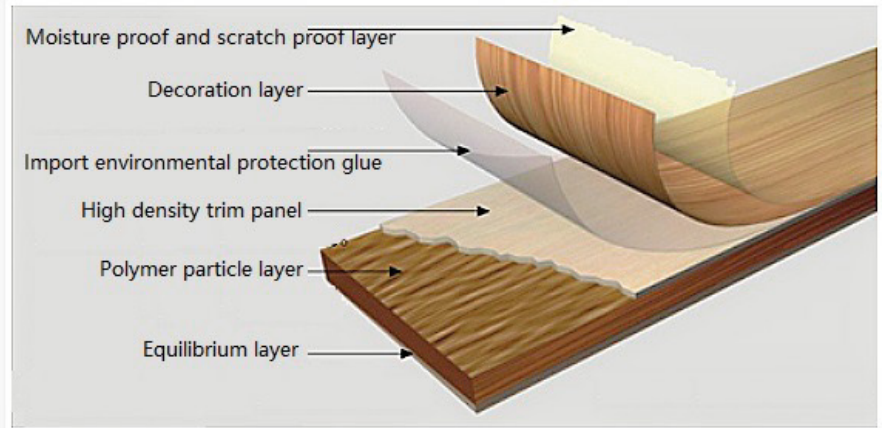
European  
E1 grade board  
Certified



China  
Environmental  
Labeling



5 years warranty



# 03

## Focus on humane care, science and technology applications everywhere

Perfect wardrobe, everywhere reflect the humanization of science and technology concern. We are starting from the customer's demand, we for the wardrobe give more human application of science and technology, induction lamp, induction of the clothes hanging rod, without exception, concentrate our considerate thinking



感应灯挂衣杆

Consider the light angle problem, solving the problem of storing no light or low light, her clothes is not convenient.



折叠伸缩烫衣板

Unique structural design, can hide the assembly, easy and convenient, save space



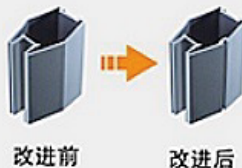
## 04 High demand manufacturing standard

Use of new improved aluminum frame, the installation of professional dust, with precision, professional installation, to ensure the best effect of closure, there is no gap between the door, to prevent the invasion of dust impurities wardrobe.

Use moisture-proof anti deformation ability stronger E1 level double faced decorative board; imported equipment precision molding, sealing firmly sealed, smooth to ensure wardrobe long moisture-proof, deformation.

Positioning damping sliding rail and the anti-collision strip of dual use, push and pull the sliding door smoother mute, closed more tightly, effective way to avoid friction, impact noise

防尘



采用全新改进铝材边框，加装专业防尘毛条，并配以专业的安装，确保最佳闭合效果，门板之间严丝合缝，杜绝灰尘杂质入侵衣柜。



防潮



采用防潮抗变形能力更强的E1级双饰板；进口设备精确成型，封边牢固密封、平整光滑，确保衣柜长期防潮不变形；背板安装基于防潮透气原理构建设计，时刻保持与墙面的透气清爽。



静音

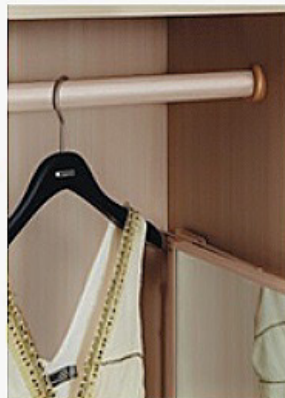


定位阻尼加防撞条的双重运用，推拉趟门更顺畅静音，闭合更紧密，有效避免磨擦、撞击噪音，更显柔和宁静关怀。



## 05 High quality hardware accessories

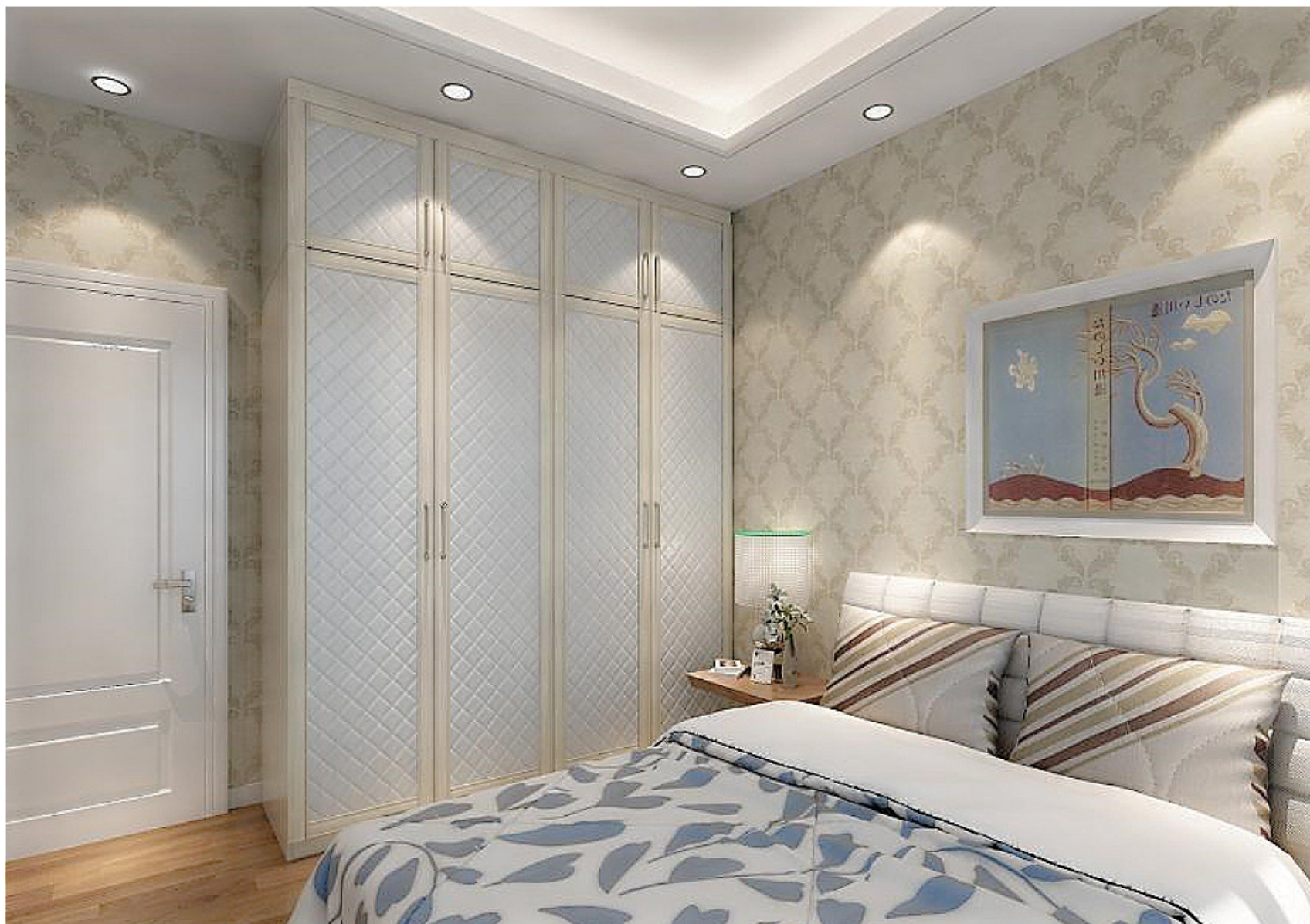
Through the establishment of long-term global strategic cooperation and procurement platform, we on high-quality hardware accessories supplier closely all equipped with Blum, Germany and other Hettic international high quality brand hardware accessories, not only to ensure that parts of high quality, but also to ensure that the door, the cabinet body, partitions and other scattered set up links and construct more precise and solid.



**YG61516**

尊贵系列衣柜 编号: YG61516

白色是衣柜永恒的经典,加上小方格纯白皮纹门板,增添了优雅高贵的气质,到顶设计,扩大了卧室的储物空间。



# YG61526 时光印象衣柜 编号: YG61526

电视柜与衣柜相结合，设计师另辟蹊径将衣柜中间设计成电视柜，新颖时尚，功能性强。



# YG61528 时光印象衣柜 编号: YG61528

胡桃木的自然纹理，散发着回归自然的纯朴气息，嵌入墙体的设计，让衣柜与卧室融为一体，温馨和谐。





**YG61527** 时光印象衣柜 编号: YG61527

沿用胡桃木的自然纹理色彩，黑色方格皮纹腰线加以点缀，让衣柜更为亮丽动人，到顶设计，增加了衣柜的储物空间。



**YG21466**

依木衣柜 编号: YG21466

柜身采用胡桃木，自然而朴素，门板是珠光白亚克力板，温馨淡雅，共同营造田园风情。

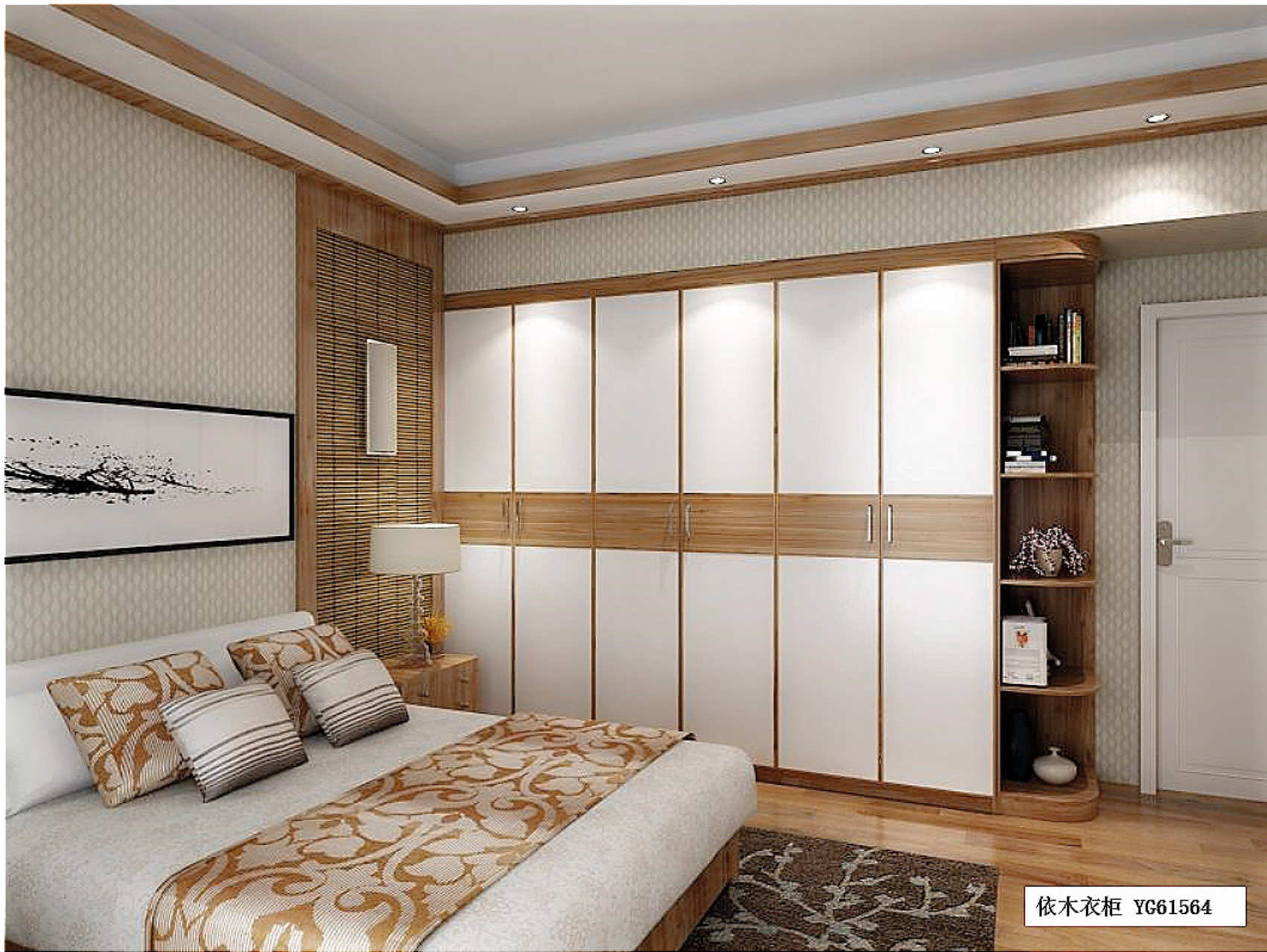


依木衣柜 YG21466



# YG61564 依木衣柜 编号: YG61564

平开门设计, 丰富衣柜层次, 胡桃木的自然纹理色彩, 自然纯朴, 转角装饰柜功能实用。



依木衣柜 YG61564



**YG61567** 依木衣柜 编号: YG61567

嵌入墙体的设计, 扩展卧室空间, 珠光白亚克力门板亮丽时尚, 与胡桃木的自然纹理搭配, 新颖时尚。



**YG61565** 依木衣柜 编号: YG61565

到顶设计, 扩大衣柜储物空间, 珠光白亚克力门板时尚美观, 胡桃木腰线增添一丝自然清新的色彩。



**YG61522** 圣卡罗衣柜 编号: YG61522

衣柜造型复古高贵，门板色泽沉稳大气，工艺精湛，尽显欧式古典尊贵品质生活。



圣卡罗衣柜 YG61522



**YG61442** 香榭丽舍 编号: YG61442

产品设计灵感来自于四叶草，低调的木纹有小清新的温馨感觉，营造一种小资情调。



# YG61538 香榭丽舍衣柜 编号: YG61538

衣柜与书桌连为一体，平开门设计，衣柜显得更为精致大气，白色苏香桐小百叶，尽显小清新的简单与美好。





**YG61539**

香榭丽舍衣柜 编号: YG61539

苏香桐小百叶精致优雅，四叶草雕花腰线清新自然，玻璃门板增添衣柜的朦胧色彩，演绎小清新的生活本态。



**YG61540**

香榭丽舍衣柜 编号: YG61540

白色苏香桐小百叶设计, 四叶草雕花腰线, 玻璃门板内设置垂帘, 营造朦胧之美, 整体呈现出清新优雅的卧室氛围。



**YG61545** 萧邦衣柜 编号: YG61545

衣柜对称设计，竖条玻璃门板美观时尚，嵌入墙体的设计，增加储物空间，让卧室更加整洁美观。



# YG61544 萧邦衣柜 编号: YG61544

玻璃门板打破衣柜一成不变的格局，虚实结合，增添衣柜层次感与美观度，温暖而舒心。



## YG61549 新英伦主义衣帽间 编号: YG61549

融合古典家具的沉稳特质于一身，搭配生动的雕花装饰，显示出高雅和尊贵的美感。



**YG61550** 新英伦主义衣柜 编号: YG61550

贵族般的高贵华丽，高雅的设计，樱桃木温润内敛的色泽，贴近自然，彰显新古典的大气豪华之势。

