



United States

📍 355 Palermo Ave
Coral Gables, Florida 33134, USA
☎ +17864266079

Bangladesh

📍 2B, Orion Green Garden, 285
Ashkona, Dhaka 1230, Bangladesh
☎ +1 818 900 9852

Colombia

📍 Ingeniería y Desarrollo: Carrera
14# 127 a 45 Bogotá, Colombia
☎ +57 311 6535901

Hong kong

📍 161~167號 Des Voeux Rd Central,
Central, Hong Kong
☎ +86-535-6723166
☎ +86-535-6723171 / 67231729

United Kingdom

📍 18 King William Street, London,
EC4N 7BP
☎ 020 3375 8046



Aluminum alloy grid drawer



Aluminum Alloy
Covered storage basket



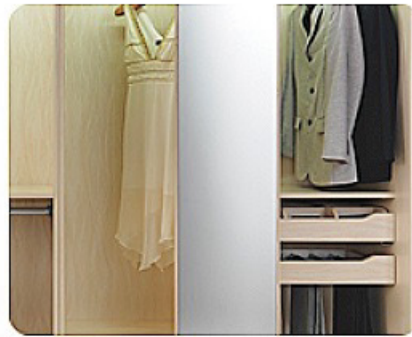
Trousers rack



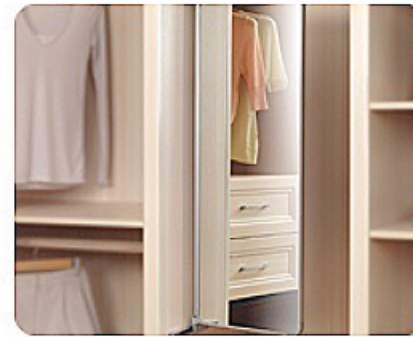
Small goods rack



Telescopic ironing board



Chuanyijing belt pulley



Push & pull mirror



Insert type secret box



Semi insert type secret box



Induction type LED wardrobe lamp



LED wardrobe lamp



Charging type LED wardrobe lamp



2 5 kinds of custom concept

01

Space combination design concept revolves around convenient, personalized experience, optimization function, space utilization and flexible combination of the five largest customers core requirements, the frequency, objects and features five partitions custom design philosophy, system construction overall wardrobe digital customized products.



Upload
Partition



Download
Partition



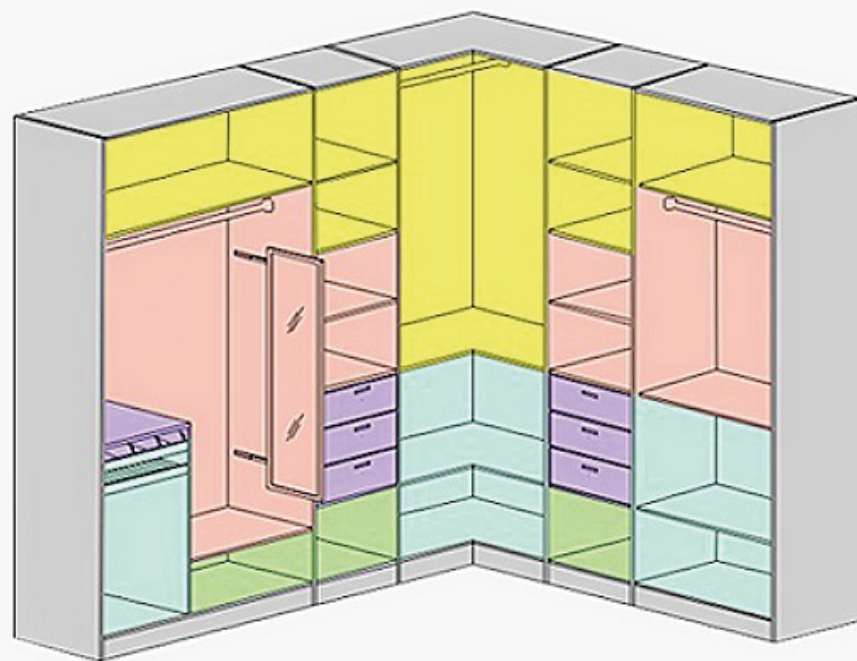
Quilts and
Blankets
Partition



Shoes and
Socks
Partition



Wear jewelry
Partition



02

Adhere to the European E1 level environmental protection standard plate

We have always committed to for each family to provide more environmentally friendly, more healthy environment furniture, adhere to consistent with the use of European E1 class environmental standards, materials, and all use automatic edge banding techniques and products using the process without pollution.



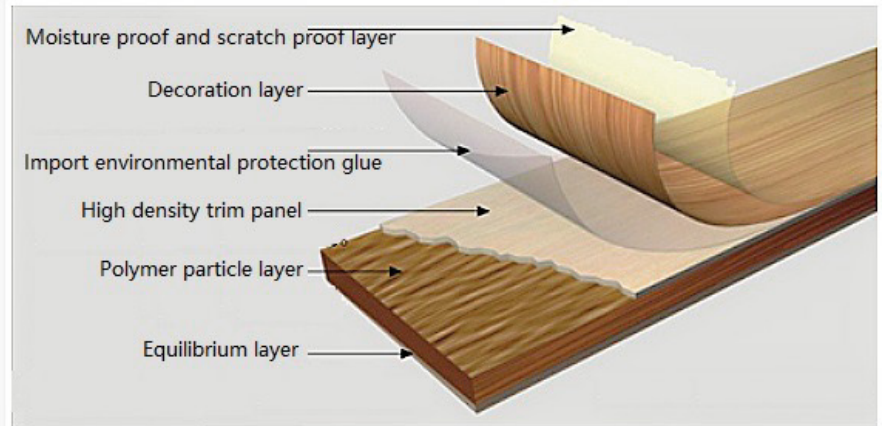
European
E1 grade board
Certified



China
Environmental
Labeling



5 years warranty



03

Focus on humane care, science and technology applications everywhere

Perfect wardrobe, everywhere reflect the humanization of science and technology concern. We are starting from the customer's demand, we for the wardrobe give more human application of science and technology, induction lamp, induction of the clothes hanging rod, without exception, concentrate our considerate thinking



感应灯挂衣杆

Consider the light angle problem, solving the problem of storing no light or low light, her clothes is not convenient.



折叠伸缩烫衣板

Unique structural design, can hide the assembly, easy and convenient, save space



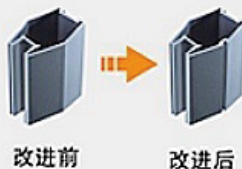
04 High demand manufacturing standard

Use of new improved aluminum frame, the installation of professional dust, with precision, professional installation, to ensure the best effect of closure, there is no gap between the door, to prevent the invasion of dust impurities wardrobe.

Use moisture-proof anti deformation ability stronger E1 level double faced decorative board; imported equipment precision molding, sealing firmly sealed, smooth to ensure wardrobe long moisture-proof, deformation.

Positioning damping sliding rail and the anti-collision strip of dual use, push and pull the sliding door smoother mute, closed more tightly, effective way to avoid friction, impact noise

防尘



采用全新改进铝材边框，加装专业防尘毛条，并配以专业的安装，确保最佳闭合效果，门板之间严丝合缝，杜绝灰尘杂质入侵衣柜。



防潮



采用防潮抗变形能力更强的E1级双饰板；进口设备精确成型，封边牢固密封、平整光滑，确保衣柜长期防潮不变形；背板安装基于防潮透气原理构建设计，时刻保持与墙面的透气清爽。



静音

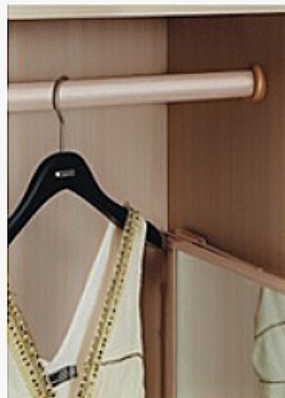


定位阻尼加防撞条的双重运用，推拉趟门更顺畅静音，闭合更紧密，有效避免磨擦、撞击噪音，更显柔和宁静关怀。



05 High quality hardware accessories

Through the establishment of long-term global strategic cooperation and procurement platform, we on high-quality hardware accessories supplier closely all equipped with Blum, Germany and other Hettic international high quality brand hardware accessories, not only to ensure that parts of high quality, but also to ensure that the door, the cabinet body, partitions and other scattered set up links and construct more precise and solid.



YG61495

曼图亚衣柜 编号: YG61495

纯白皮纹与加州红撞出了一朵炫丽之花，张扬而又内敛，高贵而又淡雅，诠释精致生活内涵。



曼图亚衣柜 YG61495



YG61513

尊贵系列衣柜 编号: YG61513

典雅的白色中用少许黑色点缀, 丰富视觉层次的同时让衣柜更为美观时尚, 转角跳跃装饰台增添了衣柜的装饰作用。



YG61514 尊贵系列衣柜 编号: YG61514

梭形小方格纯白皮纹门板时尚大气，黑底浪花腰线复古气息浓重，是现代与复古风格的完美诠释。



YG61524

时光印象衣柜 编号: YG61524

简洁的设计, 转角装饰柜增添美观度, 衣柜内部功能空间合理划分, 到顶设计增加衣柜的储物空间。



YG61529

尊贵系列衣柜 编号: YG61529

衣柜与书桌连为一体, 储物空间强大而实用, 纯白皮纹门板典雅时尚, 触感柔和。



YG61531

尊贵系列衣柜 编号: YG61531

趟门衣柜, 嵌入墙体, 内部有丰富的功能空间, 纯白皮纹门板时尚典雅, 彰显高贵优雅的生活品味。



YG61525 时光印象衣柜 编号: YG61525

胡桃木的自然纹理色彩，纯净温馨，黑色精美腰线让衣柜更加美观，在卧室营造一种回归自然的生活氛围。



YG61541

萧邦衣柜 编号: YG61541

白色苏香桐板材温暖细腻，诺曼德纯白皮纹腰线质感柔和温润，整体散发着高贵优雅的简欧气息。



YG61493 拉菲琪衣柜 编号: YG61493

桂香莉的自然清香萦绕整个卧室，格子纹玻璃腰线大方时尚，演绎现代小资生活的清新本态。



YG61555

依洛歌 编号: YG61555

衣柜沿用歌诗图门板的自然纹理与色泽, 古朴而沉稳, 诺曼德古铜色皮纹腰线增添了几分高贵气息。



YG61473

简爱衣柜 编号: YG61473

趟门衣柜分区合理, 苏香桐门板色泽清新圆润, 百叶造型门板让衣柜的透气性更好。



YG11149

加州阳光衣柜 编号: YG11149

色调如阳光般明亮灿烂, 错落的百叶装饰给人不同的视觉感受, 自然精巧、朴实舒适。



加州阳光衣柜 YG11149



YG11003 枫丹白露 衣柜 编号: YG11003

苏香桐搭配优雅的米白皮纹，优雅而清新脱俗。强大的储蓄功能，打造实用品味生活。



枫丹白露 衣柜 YG11003



YG21354 典雅衣柜 编号: YG21354

舞动心弦的玻璃腰线动感优雅，与托斯卡纳门板互相衬托，呈现现代与复古结合的画面。



YG11319

简爱衣柜 编号: YG11319

门板简洁的百叶装饰, 优雅而时尚, 趟门设计节省空间的使用, 美观中强调功能的实用性。



简爱衣柜 YG11319



YG11326 依洛歌衣柜 编号: YG11326

趟门衣柜吸取简欧设计风格的精髓，摒弃过于复杂的肌理和装饰，简化造型线条。



依洛歌衣柜 YG11326



YG11346 婆罗洲衣柜 编号: YG11346

苹果木思雅板与白色雕花腰线的完美结合，时尚新颖，流露与生俱来的高贵气息。



婆罗洲衣柜 YG11346



YG21338

玛莎克衣柜 编号: YG21338

衣柜整个色调清新淡雅，木纹板花色纹理感强烈，营造现代时尚的生活氛围。



玛莎克衣柜 YG21338



YG11429

西湖春晓衣柜 编号: YG11429

整体纯洁而高雅,趟门设计简练而实用,纯白皮纹细腻,手感舒适,让您品味尊贵奢华。



西湖春晓衣柜 YG11429



YG21454

时光印象衣柜 编号: YG21454

时尚细腻的暗纹皮革与大气沉稳的胡桃木形成对比，强烈而不浮躁，纯粹而不乏味。



时光印象衣柜 YG21454



YG11302 拉菲琪衣柜 编号: YG11302

流金岁月玻璃突显现代感，搭配桂香莉柏雅板衬托出温馨，适合大众化人群。



拉菲琪衣柜 YG11302



YG11139

北欧时尚 编号: YG11139

柔和色调，简约设计，裂纹腰线加入个性洒脱，构造出自由和无线的美感。



北欧时尚 YG11139



YG61449

格莱美 编号: YG61449

门板颜色朴素而时尚，方格皮纹腰线让衣柜更加丰富，门板边框线条明朗，做工精益求精。



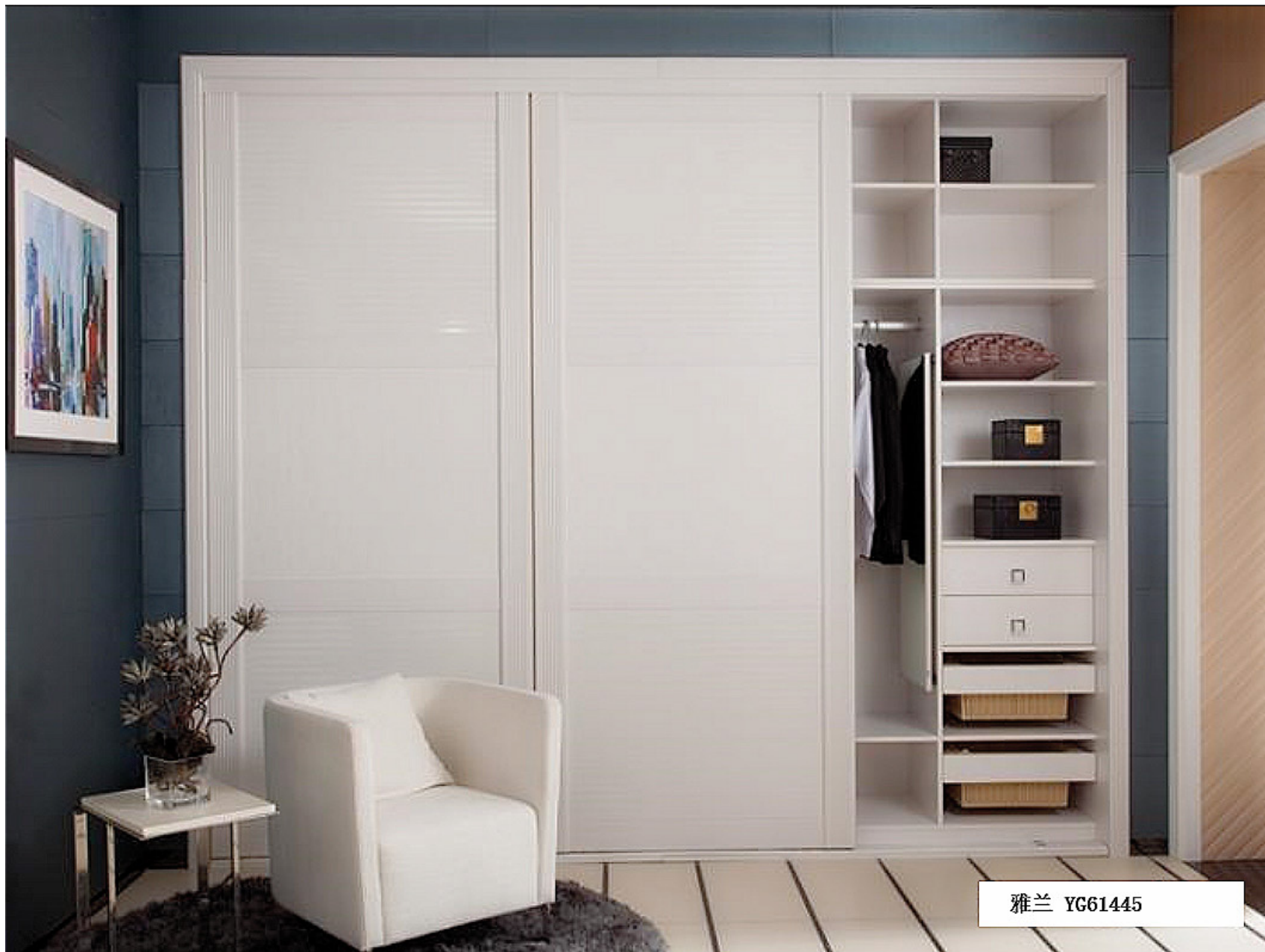
格莱美 YG61449



YG61445

雅兰 编号: YG61445

简单的色调、简单的装饰造型造就不凡的外表，柜内多种功能需求设计，满足不同所需。



雅兰 YG61445



YG11160

曼图亚 编号: YG11160

衣柜嵌入墙里节省空间, 衣柜门板使用古铜色皮纹, 精致大气, 诠释尊贵的居家生活。



曼图亚 YG11160



YG11301

拉菲琪 编号: YG11301

腰线的格子纹玻璃装饰碰撞出时尚感，衣柜里面功能分区，强调实用性。

